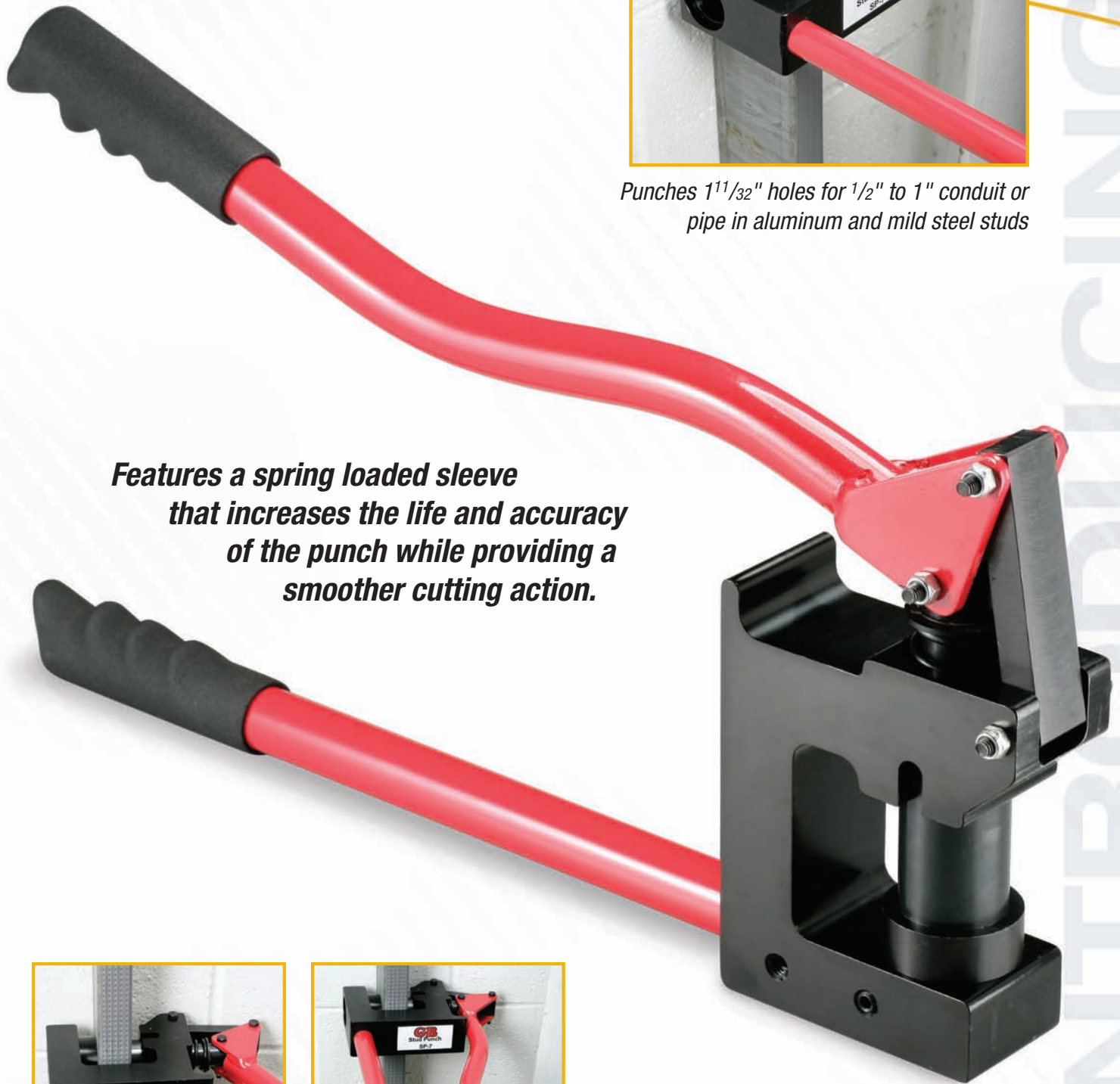




Stud Punch



Punches 1¹/₃₂" holes for 1/2" to 1" conduit or pipe in aluminum and mild steel studs

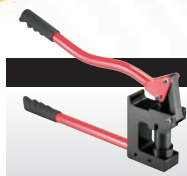


Features a spring loaded sleeve that increases the life and accuracy of the punch while providing a smoother cutting action.



DEMAND THE BEST. DEMAND GARDNER BENDER.

STUD PUNCH SPECS



Part#
Description

UPC

1 of 5

UNIT		MASTER	
Qty Weight	Length Width Height	Qty Weight	Length Width Height
1 0.725 lbs	2.000 7.000 12.750	3 2.535 lbs	13.143 7.566 7.605

STUD PUNCH

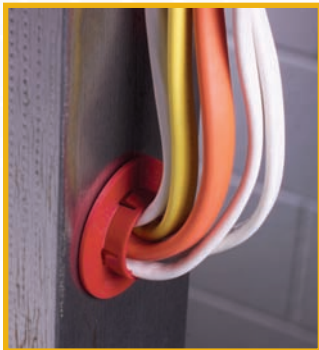
SP-7
Stud Punch

032076067137

50032076067132

Kit #	Description	Qty	Kit #	Description	Qty
REPLACEMENT PARTS					
SP7SSK	Replacement Spring & Sleeve Kit		SP7PLK	Replacement Pivot Link Kit	
	Bushing	1		Bolt (HHCS) M6-57	1
	Washer	2		Bolt (HHCS) M6-45	2
	Split Washer	1		Lock-Nut-M6	3
	Spring	1		Pivot-Link	1
SP7PDK	Replacement Punch Die Kit		SP7PDK	Replacement Punch Kit	
	Die	1		Punch	1
	Set Screw	2		Bolt (HHCS) M6-45	2
				Lock-Nut-M6	2

STUD PUNCH ACCESSORIES



Patented One-Piece Design

Exclusively from Gardner Bender, new SnapSHOT™ Universal Stud Insulators provide code mandated* 360° protection for cable runs through increasingly popular metal studs, where sharp hole edges could otherwise gouge plastic or rubber-jacketed electric, communications or network cable. The patented one-piece design and folding tabs make installation literally a snap, resulting in a tight and secure attachment to the stud. The smooth, hang-free surface eases pulls, while the high-density SnapSHOT™ design accommodates any shape pre-punched hole or standard 1¹/₃₂" field-punched holes.

*Meets requirements of NEC Article 300-4(b) and CEC Rule 12-516.

Code-compliant protection for NM Cable in both factory and field punched metal studs.



Feature Comparison

	Gardner Bender	Caddy	Greenlee	Arlington
Fits factory punched holes/standard holes	•	•	•	•
Easy to install design	•			
One-piece installation	•			
UL approved	•		•	•

Part #	Description	Pkg	Qty
SI-25	Metal Stud Insulator	Bag	25

www.gardnerbender.com | PO Box 3241 Milwaukee, WI 53201-3241 | 414.352.4160 | fax 414.352.2377
 6615 Ordan Drive | Mississauga, Ontario L5t 1x2 | 905.564.5749 | fax 905.564.0305
 NPA-781 | August 2008