

DS-0007

2/04



WireGard™ Electrical Wire Connector 72B Hi-Temp (Black)

APPLICATION

Use 72B Hi-Temp WireGard™ twist-on wire connector in general purpose applications of 2 or more copper wires. 72B Hi-Temp connectors feature side knurling for easy grip.

SPECIFICATIONS

WireGard™ connectors shall feature straight type shell & steel inner spring and be suitable for connecting copper wire from #22 to #16 AWG. Shell shall also be molded of nylon to achieve high temperature and corrosion resistance required in lighting applications. Spring shall be plated to resist corrosion and have a square profile to provide secure contact with wires.

Connectors shall be rated for use with 300 V building wire plus be UL listed and CSA certified for applications up to 150 °C for high temperature lighting applications. 72B Hi-Temp connectors must have few turns to meet required torque, meet or exceed UL pull out and dielectric test requirements.

INSTALLATION INSTRUCTIONS

- Strip wire $\frac{5}{16}$ " (7.9 mm). For 16 and 18 gauge stranded wires, strip $\frac{3}{8}$ " (10 mm).
- Pretwisting unnecessary. Hold stripped wires together with ends even. (Lead stranded wires slightly).
- Align any frayed strands or conductors.
- Screw on connector; push wires firmly into connector when starting.
- To be sold only with installation instructions.

⚠ WARNING: Shut off power before working on a circuit. Use approved materials and conform to all electrical codes.

CONSTRUCTION

Shell: PBT (polybutylene terephthalate)
Color - Black

Innerspring: Zinc plated, square profile steel wire

Temperature Rating: 150 °C (302 °F)

WIRE RANGE

#22 to #16 AWG Solid or Stranded conductors

Copper conductors only, 300 V max. building wire

REGULATORY APPROVALS

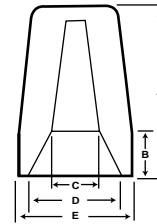
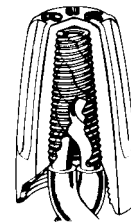
UL: List for pressure type wire connectors per UL 486C, file number 760R. UL94V-2 flame retardant.

CSA: Certified to CSA standard 22.2 No188, File LR36793



DIMENSIONS

Model		A	B	C	D	E
72B	(in)	$\frac{45}{64}$	$1\frac{1}{64}$	$\frac{3}{16}$	$\frac{5}{16}$	$\frac{25}{64}$
	(mm)	17.9	4.4	4.8	7.9	9.9



LISTED WIRE COMBINATIONS

LISTED FOR USE WITH: COPPER TO COPPER Temperature rating: 150 °C (302 °F) Listed as a PRESSURE-TYPE wire connector for the following solid and/or stranded wire connections:

300 V max. building wire	2 #16 + 1 #18	1 #20 + 4 #22
2 / 3 #16	2 #16 + 1 / 2 #20	2 #20 + 2 / 3 #22
2 - 4 #18	2 #16 + 1 - 3 #22	3 #20 + 1 / 2 #22
2 - 5 #20	1 #18 + 1 - 4 #20	4 #20 + 1 #22
3 - 5 #22	1 #18 + 3 / 4 #22	
1 #14 + 1 #16 / 18	1 / 2 #18 + 1 #20 + 1 #22	
1 #14 + 1 - 3 #20	2 #18 + 1 - 3 #20 / 22	
1 #14 + 1 - 4 #22	3 #18 + 1 / 2 #20 / 22	
1 #16 + 1 / 2 #18	4 #18 + 1 #22	
1 #16 + 1 - 4 #20 / 22		
1 / 2 #16 + 1 #20 + 1 #22		