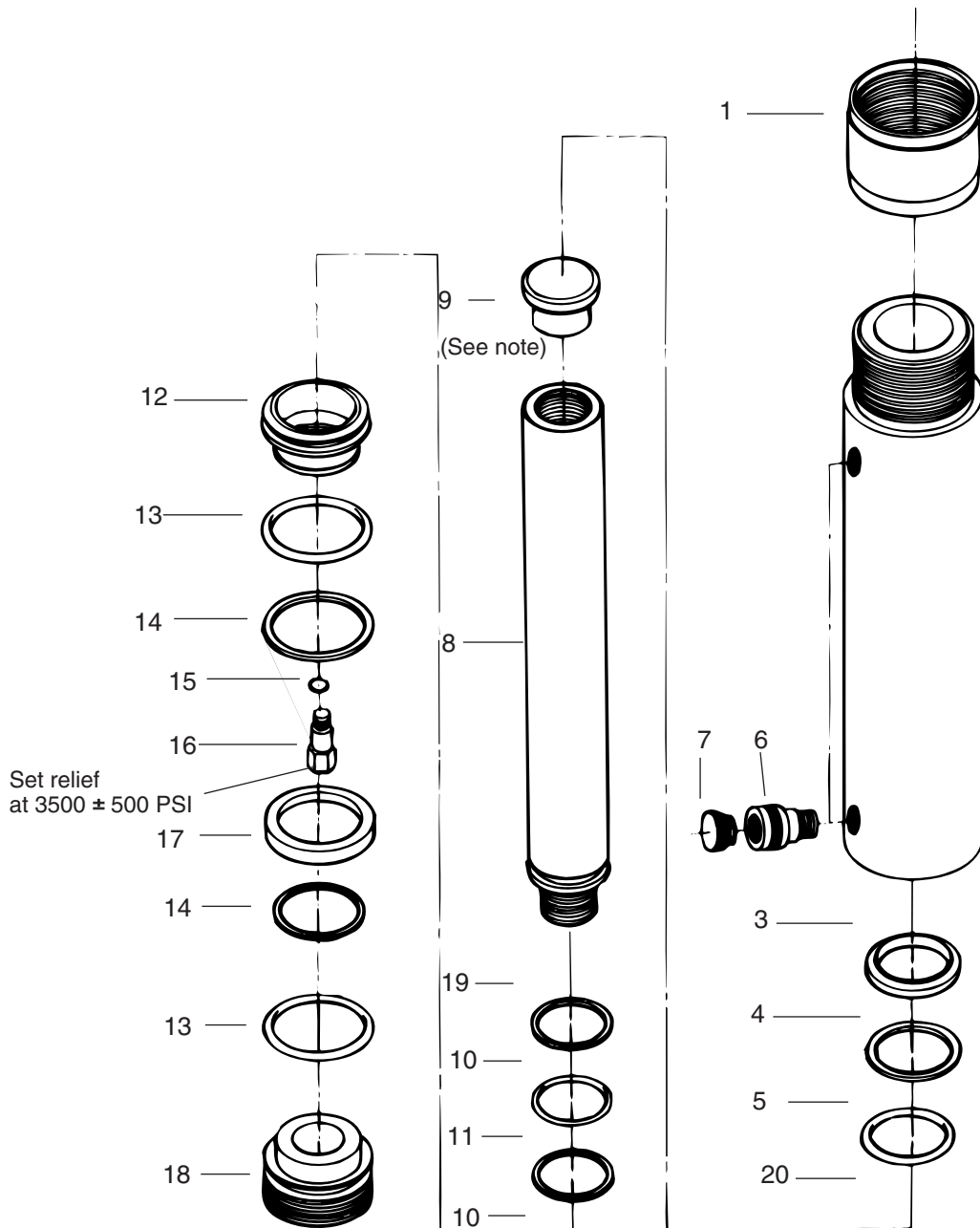


GB ELECTRICAL CANNOT BE RESPONSIBLE FOR DAMAGE OR INJURY CAUSED BY UNSAFE USE, MAINTENANCE OR APPLICATION OF ITS PRODUCTS. Please contact GB ELECTRICAL for guidance when you are in doubt as to the proper safety precautions to be taken in designing and setting up your particular application. To protect your warranty use only GB/Enerpac hydraulic oil.

After assembly and testing, lightly stake threads of item 18.

Note: For use with rigid conduit bending machines, specify an A-29 Saddle.



PARTS LIST
Serial Numbers Beginning with "O"

Item No.	Part Number	No. Req'd	Description
1	R158.271	1	Thread Protector
2	U962012570	1	Base, Cylinder
3	* C879.044	1	Ring, Wiper
4	* B1330.565	1	Ring, Backup
5	* B1330.903	1	O-Ring
6	CR-400	2	Coupler Half
7	CD-411	2	Dust Cap
8	U962012040-1	1	Plunger
9	** L623.900	1	Saddle Assembly
10	* B1135.564	2	Washer, Backup
11	* B1270.503	1	O-Ring
12	M846.051	1	Piston
13	* B1036.503	2	O-Ring
14	* B1333.565	2	Washer, Backup
15	* B159.167	1	Gasket
16	DA11126900	1	Valve, Relief
17	* CH876.041	1	U-Cup
18	Y644.570	1	Cap, End
19	B1343564	1	Back-up Washer
20	B1046503	1	O-Ring

*** Indicates items in Repair Kit CD3028K**
**** For use on Conduit Benders, order Saddle A-29 separately**

REPAIR AND SERVICE INSTRUCTIONS: For repair service and parts contact your nearest GB ELECTRICAL Service Center. The Service Center will provide complete and prompt service on all GB ELECTRICAL products.

<p>PARTS AND SERVICE: For quality workmanship and genuine GB ELECTRICAL parts, select an Authorized GB Service Center for your repair needs. Only repairs performed by an Authorized Service Center displaying the official GB Authorized sign are backed with full factory warranty. Contact GB Electrical (414) 352-4160 for the name of the nearest GB Authorized Service Center.</p>	<p>WARRANTY: GB ELECTRICAL, INC. warrants its products against defects in workmanship and materials for 1 year from date of delivery to user. Chain is not warranted. Warranty does not cover ordinary wear and tear, abuse, misuse, overloading, altered products or use of improper fluid.</p>	<p>WARRANTY RETURN PROCEDURE: When question of warranty claim arises, send the unit to the nearest GB Authorized Service Center for inspection, transportation prepaid. Furnish evidence of purchase date. If the claim comes under the terms of our warranty the Authorized Service Center will REPAIR OR REPLACE PARTS AFFECTED and return the unit prepaid.</p>
---	---	---



GB Electrical, Inc.
An Applied Power Company

6101 N. Baker Road, Milwaukee, WI 53209
Phone: (414) 352-4160 FAX (414) 352-2377

RPS-0063 Rev. A 03/07