

DS-0003

2/04



WireGard™ Electrical Wire Connector GB-3 (Orange)

APPLICATION

Use GB-3 WireGard™ twist-on wire connector in general purpose applications of 2 or more copper wires. GB-3 connectors feature side knurling for easy grip.

SPECIFICATIONS

WireGard™ connectors shall feature straight type shell & steel inner spring and be suitable for connecting copper wire from #22 to #14 AWG. Spring shall be plated to resist corrosion and have a square profile to provide secure contact with wires. Connectors shall be rated for use with 600 V building wire / 1000 V lighting applications plus be UL listed and CSA certified for applications up to 105 °C. WireGard™ connectors must have few turn to meet required torque, meet or exceed UL pull out and dielectric test requirements.

INSTALLATION INSTRUCTIONS

- Strip wire $\frac{5}{16}$ " (8 mm). For 6 and 18 gauge stranded wires, strip $\frac{3}{8}$ " (10 mm).
- Pretwisting unnecessary. Hold stripped wires together with ends even. (Lead stranded wires slightly).
- Align any frayed strands or conductors.
- Screw on connector; push wires firmly into connector when starting.
- To be sold only with installation instructions.

⚠ WARNING: Shut off power before working on a circuit. Use approved materials and conform to all electrical codes.

CONSTRUCTION

Shell: Polypropylene, Color - Orange
Innerspring: Zinc plated, square profile steel wire
Temperature Rating: 105 °C (221 °F)

WIRE RANGE

#22 to #14 AWG Solid or Stranded conductors
 Copper conductors only, 600 V max. building wire; 1000 V max for lighting fixtures & luminaires/signs

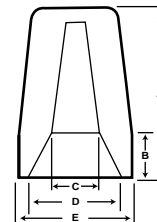
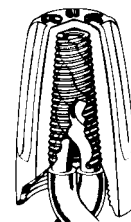
REGULATORY APPROVALS

UL: List for pressure type wire connectors per UL 486C, file number 760R.
CSA: Certified to CSA standard 22.2 No188, File LR36793



DIMENSIONS

| Model | | A | B | C | D | E |
|-------|------|-----------------|-----------------|-----------------|-----------------|----------------|
| GB-3 | (in) | $\frac{27}{32}$ | $\frac{21}{64}$ | $\frac{13}{64}$ | $\frac{11}{32}$ | $\frac{7}{16}$ |
| | (mm) | 5.6 | 8.3 | 5.2 | 8.7 | 11.1 |



LISTED WIRE COMBINATIONS

LISTED FOR USE WITH: COPPER TO COPPER Temperature rating: 105 °C (221 °F) Listed as a PRESSURE-TYPE wire connector for the following solid and/or stranded wire connections:

| | | | |
|--|---------------------------|----------------------------|-----------------------|
| 600 V max. building wiring | 1 #16 + 1 #20 + 1 #22 | 3 #20 + 1 / 2 #22 | 1 #16 + 3 / 4 #18 |
| 1000 V max. lighting fixtures/luminaires & signs | 1 #16 + 1 - 4 #22 | 4 #20 + 1 #22 | 1 #16 + 4 #20 |
| 2 #14 / 16 | 2 #16 + 1 #20 | 300 V max. building wiring | 2 #16 + 1 - 3 #18 |
| 2 - 4 #18 | 2 #16 + 1 / 2 #22 | 3 / 4 #16 | 2 #16 + 2 / 3 #20 |
| 3 - 5 #20 | 1 #18 + 2 - 4 #20 | 5 #18 | 2 #16 + 1 #20 + 1 #22 |
| 5 #22 | 1 #18 + 3 / 4 #22 | 1 #14 + 1 / 2 #16 | 2 #16 + 3 #22 |
| 1 #14 + 1 #18 | 1 / 2 #18 + 1 #20 + 1 #22 | 1 #14 + 2 / 3 #18 | 3 #16 + 1 #18 |
| 1 #14 + 1 / 2 #20 | 2 #18 + 1 - 3 #20 / 22 | 1 #14 + 3 / 4 #20 | 3 #16 + 1/2 #20 / 22 |
| 1 #14 + 1 - 3 #22 | 3 #18 + 1 #20 | 1 #14 + 4 #22 | 4 #16 + 1 #20 / 22 |
| 1 #16 + 1 / 2 #18 | 3 #18 + 1 / 2 #22 | 2 #14 + 1 #18 | 3 #18 + 2 #20 |
| 1 #16 + 1 - 3 #20 | 1 #20 + 4 #22 | 2 #14 + 1 - 3 #20 / 22 | 4 #18 + 1 #20 / 22 |
| | 2 #20 + 2 / 3 #22 | | |