

DS-0004

2/04



### WireGard™ Electrical Wire Connector GB-4 (Yellow)

#### APPLICATION

Use GB-4 WireGard™ twist-on wire connector in general purpose applications of 2 or more copper wires. GB-4 connectors feature side knurling for easy grip.

#### SPECIFICATIONS

WireGard™ connectors shall feature straight type shell & steel inner spring and be suitable for connecting copper wire from #18 to #10 AWG. Spring shall be plated to resist corrosion and have a square profile to provide secure contact with wires.

Connectors shall be rated for use with 600 V building wire / 1000 V lighting applications plus be UL listed and CSA certified for applications up to 105 °C. WireGard™ connectors must have few turn to meet required torque, meet or exceed UL pull out and dielectric test requirements.

#### INSTALLATION INSTRUCTIONS

- Strip wire 7/16" (11 mm).
- Pretwisting unnecessary. Hold stripped wires together with ends even. (Lead stranded wires slightly).
- Align any frayed strands or conductors.
- Screw on connector; push wires firmly into connector when starting.
- To be sold only with installation instructions.

**⚠ WARNING: Shut off power before working on a circuit. Use approved materials and conform to all electrical codes.**

#### CONSTRUCTION

**Shell:** Polypropylene, Color - Yellow

**Innerspring:** Zinc plated, square profile steel wire

**Temperature Rating:** 105 °C (221 °F)

#### WIRE RANGE

#18 to #10 AWG Solid or Stranded conductors

Copper conductors only, 600 V max. building wire; 1000 V max for lighting fixtures & luminaires/signs

#### REGULATORY APPROVALS

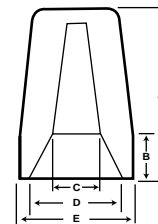
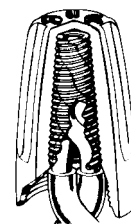
**UL:** List for pressure type wire connectors per UL 486C, file number 760R. UL94V-2 flame retardant.

**CSA:** Certified to CSA standard 22.2 No188, File LR36793



#### DIMENSIONS

Model		A	B	C	D	E
GB-4	(in)	15/16	17/64	15/64	7/16	35/64
	(mm)	23.8	6.8	6.0	11.1	13.9



#### LISTED WIRE COMBINATIONS

LISTED FOR USE WITH: COPPER TO COPPER Temperature rating: 105 °C (221 °F) Listed as a PRESSURE-TYPE wire connector for the following solid and/or stranded wire connections:

600 V max. building wiring	1 #12 + 1 / 2 #14, 16, 18, 20 / 22	1 #18 + 2 - 5 #20 / 22
1000 V max. lighting fixtures/luminaires & signs	2 #12 + 1 #14, 16, 18, 20 / 22	2 #18 + 1 - 4 #20 / 22
1 #10, 12 / 14	1 #14 + 1 - 3 #16, 18, 20 / 22	3 #18 + 1 - 3 #20 / 22
2 / 3 #12	2 #14 + 1 / 2 #16, 18, 20 / 22	4 #18 + 1 / 2 #20 / 22
2 - 4 #14	3 #14 + 1 #16, 18, 20 / 22	5 #18 + 1 #20 / 22
2 - 6 #16 / 18	1 #16 + 1 - 5 #18 / 20	1 #20 + 2 - 5 #22
3 - 6 #20	1 #16 + 2 - 5 #22	2 #20 + 1 - 4 #22
4 - 6 #22	2 #16 + 1 - 4 #18, 20 / 22	3 #20 + 1 - 3 #22
1 #10 + 1 #12	3 #16 + 1 - 3 #18, 20 / 22	4 #20 + 1 / 2 #22
1 #10 + 1 / 2 #14 / 16	4 #16 + 1 / 2 #18, 20 / 22	5 #20 + 1 #22
1 #10 + 1 - 3 #18	5 #16 + 1 #18, 20 / 22	