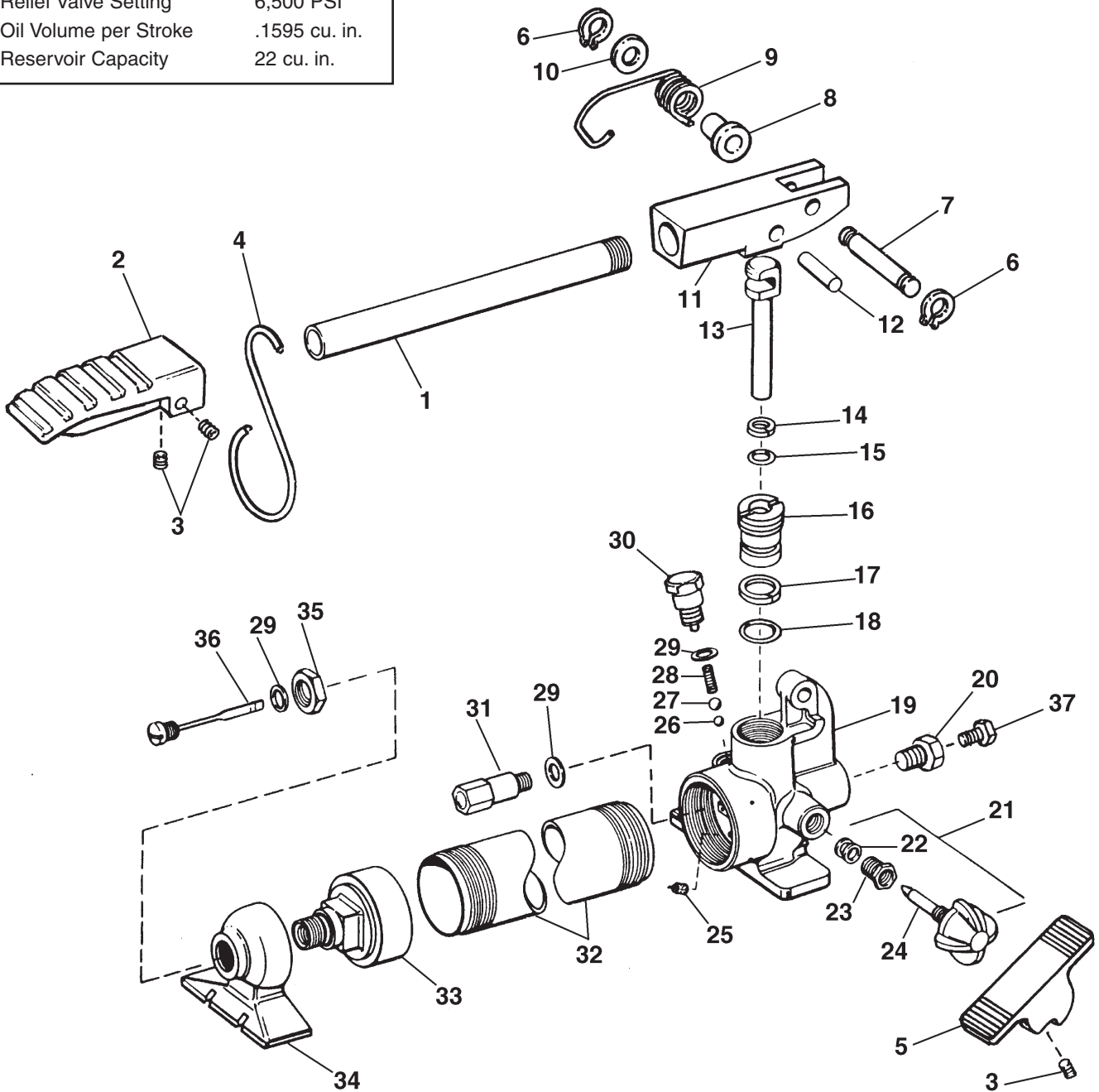


SPECIFICATIONS

Operating Pressure	6,500 PSI
Relief Valve Setting	6,500 PSI
Oil Volume per Stroke	.1595 cu. in.
Reservoir Capacity	22 cu. in.



PARTS LIST

PF65 Serial Numbers

Item Number	Model No. PF65	Number Required	Description
1	B382070	1	Handle, Pump
2	C413218	1	Pedal, Foot
3	C514173	3	Setscrew
4	CF930017	1	Hook, Handle
5	C412318	1	Release, Foot
6	CH693044	2	Ring, Retaining
7	CF659061	1	Pin, Beam
8	CK317186	1	Washer
9	CF875110	1	Spring
10	CF876186	1	Spacer
11	B113060-1	1	Beam
12	P7557	1	Cross Pin
13	P1651	1	Plunger, Pump
14	* B1112564	1	Ring, Back-up
15	* B1112803	1	O-ring
16	* CN204446	1	Sleeve, Piston
17	* B1117565	1	Ring, Back-up
18	* B1117903	1	O-ring
19	Not available	1	Base
20	A1008245	1	Plug
21	CL655950	1	Valve Assembly, Release
22	* B217074	2	Packing
23	MJ11-1	1	Nut, Packing
24	BJ109900	1	Spindle Assembly
25	P30718	1	Screen, Oil
26	* B1006016	1	Ball
27	* B1009016	1	Ball
28	* S1183	1	Spring
29	* B159167	3	Gasket
30	K3006	1	Plug, Valve
31	P181190	1	Valve, By-pass
32	B381025	1	Reservoir
33	P75266-1	1	Cap, Reservoir
34	P76267-1	1	Rest, Pump
35	P75181	1	Nut, Pump Rest
36	B110900	1	Plug, Filler
37	CJ657032	1	Bushing Reducer

*Starred items are included in Repair Kit P39K4

REPAIR AND SERVICE INSTRUCTIONS: For repair service and parts contact your nearest GB ELECTRICAL Service Center. The Service Center will provide complete and prompt service on all GB ELECTRICAL products.

<p>PARTS AND SERVICE: For quality workmanship and genuine GB ELECTRICAL parts, select an Authorized GB Service Center for your repair needs. Only repairs performed by an Authorized Service Center displaying the official GB Authorized sign are backed with full factory warranty. Contact GB Electrical (414) 352-4160 for the name of the nearest GB Authorized Service Center.</p>	<p>WARRANTY: GB ELECTRICAL, INC. warrants its products against defects in workmanship and materials for 1 year from date of delivery to user. Chain is not warranted. Warranty does not cover ordinary wear and tear, abuse, misuse, overloading, altered products or use of improper fluid.</p>	<p>WARRANTY RETURN PROCEDURE: When question of warranty claim arises, send the unit to the nearest GB Authorized Service Center for inspection, transportation prepaid. Furnish evidence of purchase date. If the claim comes under the terms of our warranty the Authorized Service Center will REPAIR OR REPLACE PARTS AFFECTED and return the unit prepaid.</p>
---	---	---



GB Electrical, Inc.
An Applied Power Company

6101 N. Baker Road, Milwaukee, WI 53209
Phone: (414) 352-4160 FAX (414) 352-2377