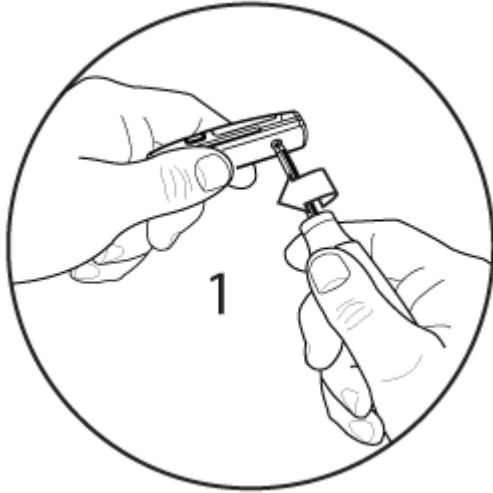
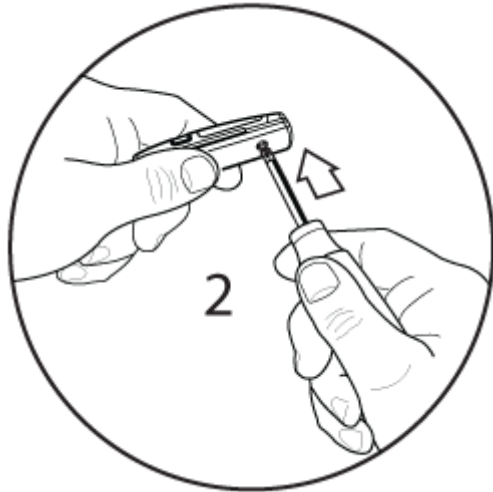


How do I remove the battery cover from the CAM10?

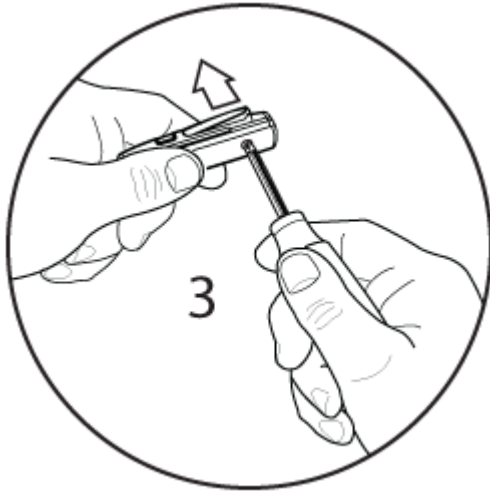
Removing the battery cover from the CAM 10 should be an easy task, however due to changes in the environment you might experience some tightness in the battery cover gasket, making it hard for the battery cover to come loose. Please follow this simple procedure to remove the battery cover:



1. Use a Phillips head screwdriver to loosen the screw. Leave the screw engaged. (Figure 1)



2. Push on the screw with the screw driver. (Figure 2)



3. The battery cover pops open.
(Figure 3)

4. Insert the two LR44 batteries (included) in the orientation indicated on the side of the battery cover. Replace cover and screw.